



Beaufort County Public Works Stormwater Infrastructure Project Summary

Project Summary: Peace Haven Drive Outfall

Narrative Description of Project:

Completion: Feb-13

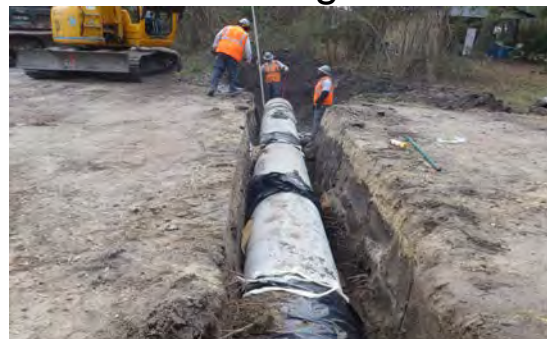
Project improved 345 L.F. of drainage system. Reconstructed 335 L.F. of outfall ditch. Cleaned out 10 L.F. of roadside ditch and (1) catch basin. Removed blockage from flowline. Replaced (1) crossline pipe. Removed (1) catch basin and stub out pipe. Repaired washout. Installed (1) access pipe, rip rap and hydroseeded for erosion control.

2013-013A / Peace Haven Drive	Labor Hours	Labor Cost	Equipment Cost	Material Cost	Contractor Cost	Indirect Labor	Total Cost
APINS / Access pipe - installed	40.0	\$914.70	\$309.03	\$174.25	\$0.00	\$581.30	\$1,979.28
AUDIT / Audit Project	1.0	\$20.89	\$0.00	\$0.00	\$0.00	\$13.23	\$34.12
BKFILL / Back Fill	40.0	\$914.70	\$120.20	\$35.40	\$0.00	\$581.30	\$1,651.60
CBCO / Catch basin - clean out	4.0	\$94.46	\$44.32	\$21.20	\$0.00	\$64.94	\$224.92
CPRPL / Crossline Pipe - Replaced	50.0	\$1,125.50	\$316.80	\$1,047.11	\$0.00	\$715.70	\$3,205.11
DPRPL / Driveway Pipe - Replaced	3.5	\$140.81	\$14.07	\$9.00	\$0.00	\$118.86	\$282.74
HAUL / Hauling	88.5	\$1,923.73	\$925.55	\$1,396.17	\$0.00	\$1,276.17	\$5,521.61
HYDR / Hydroseeding	6.0	\$133.38	\$28.52	\$103.92	\$0.00	\$64.24	\$330.06
NONPRO / Non-Professional Services	0.0	\$0.00	\$0.00	\$0.00	\$1,061.01	\$0.00	\$1,061.01
ODREC / Outfall ditch - reconstructed	76.0	\$1,729.74	\$577.80	\$125.40	\$0.00	\$1,104.47	\$3,537.41
ONJV / Onsite Job Visit	26.5	\$912.93	\$106.53	\$87.00	\$0.00	\$738.61	\$1,836.07
PI / Project Inspection	1.0	\$40.23	\$4.02	\$3.00	\$0.00	\$33.96	\$81.21
RB / Remove blockage from flowline	4.0	\$99.46	\$8.04	\$3.00	\$0.00	\$63.34	\$173.84
SC / Sediment Control	12.0	\$276.99	\$46.21	\$34.11	\$0.00	\$187.68	\$544.99
UTLOC / Utility locates	3.0	\$62.67	\$0.00	\$0.00	\$0.00	\$39.69	\$102.36
2013-013A / Peace Haven Drive Sub Total	355.5	\$8,390.18	\$2,501.09	\$3,039.54	\$1,061.01	\$5,583.49	\$20,566.31
Grand Total	355.5	\$8,390.18	\$2,501.09	\$3,030.54	\$1,061.01	\$5,583.49	\$20,566.31

Before



During



After



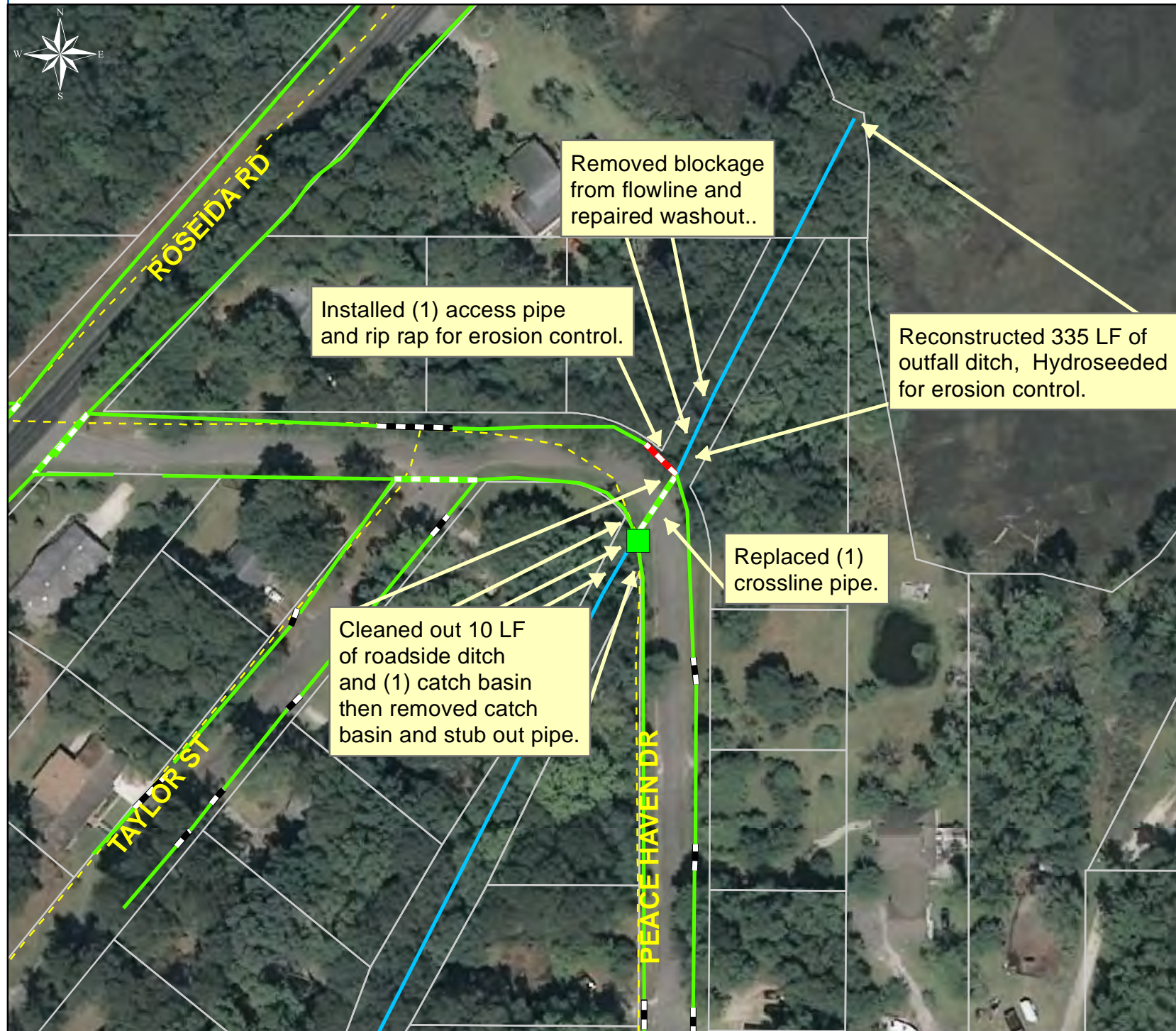
Project: Peace Haven Drive

Activity: Drainage Enhancement

Project #: 2013-013A

Township: Port Royal Island

Completed: February 2013



Legend

TYPE

- River
- Creek/Stream
- River/Creek/Marsh BANK
- Channel (fka Outfall)
- Channel Pipe
- Lateral
- Lateral Pipe
- Roadside
- Roadside Pipe
- Road Pipe
- Crossline Pipe
- Driveway Pipe
- Access Pipe
- Bleeder Pipe
- Parcels



1 inch = 97 feet

Prepared By: BC Stormwater Management Utility

Date Print: 3/18/13

File: C:/sethdata/projects/projectmaps/Peace haven dr 2013-013A